

DOUBLE SIDED SNAP FRAME 25MM



ONE DISPLAY FOR POSTERS TO BE VISIBLE FROM BOTH INSIDE AND OUTSIDE

A suitable way to present your messages and posters in spaces where you have no wall mounting possibilities. If suspended from the ceiling via wire cables in front of shop windows, the posters can be viewed both from the inside and from the outside. 1" / 25mm silver anodized finish construction gives this window hanging frame a sleek look even though it has the durability to last long. Printed posters are suitable to be displayed with this hanging windows sign. The way you update your graphics is exactly the same as you do with regular snap frames. So snap open the profiles and place your poster. All required hanging accessories and a user guide are sent along with the product. Once you receive this hanging window frame and mounting instructions, all you need is less than ten minutes to fix it.

KEY SELECTION ATTRIBUTES

- Ideal for various poster sizes.
- Natural silver-anodized and various RAL colors available with antimicrobial powder coating.
- 2 Anti-glare poster cover sheets.
- PP middle panel to keep posters straight and prevent light transmission.

- Provided with standard portrait or vertical assembly slots
- Optional portrait or vertical use to be indicated with the order.
- Free hanging hook comes with frame in standard.

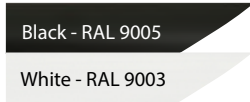


COLOURS IN STOCK



Silver

COLOUR OPTIONS



CORNER TYPES



SUITABLE FOR

Snap Frame can be used for INDOOR applications, for signage needs in many locations like shopping centers, markets, groceries, hotels, offices airports, shops and stores, hospitals, schools, apartments, exhibition centers and many more.

WATCH VIDEO

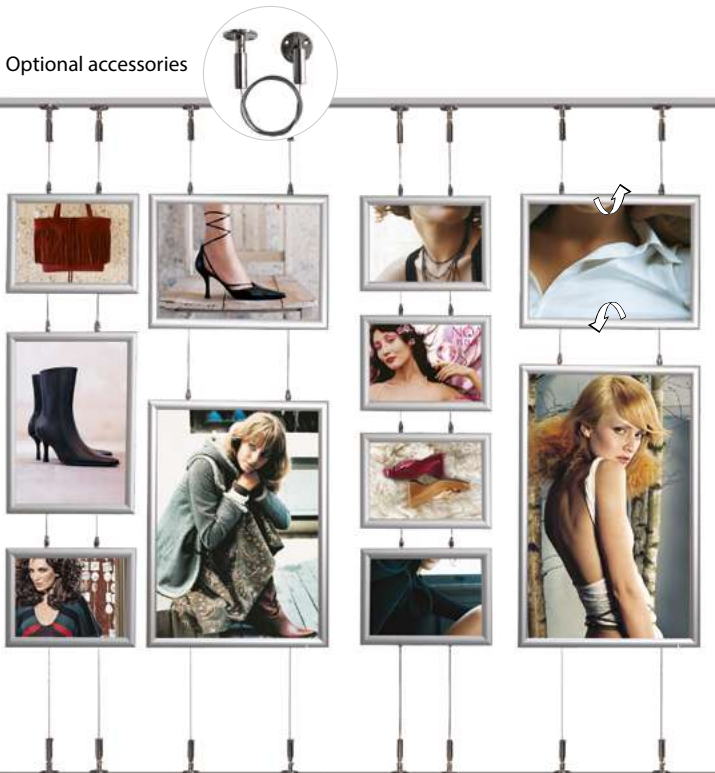


Watch video at our website www.mtdisplays.com

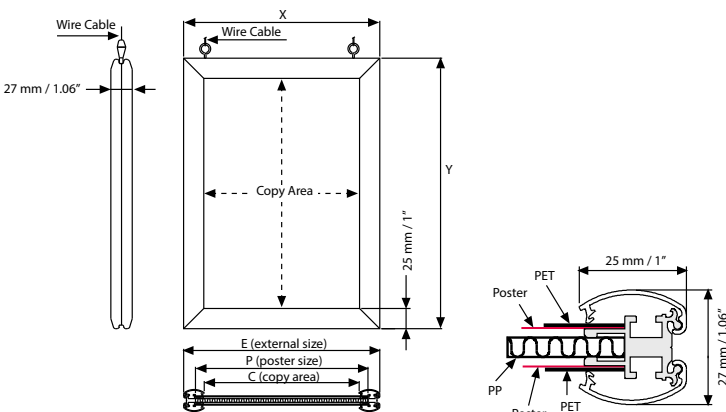
FEATURES



EXPLODED VIEW



TECHNICAL DRAWING



ARTICLES

ARTICLE	EXTERNAL (x-y)	POSTER	COPY	WEIGHT	PACKING SIZE
				WITH PACKING	*W X H X D
UCD255N2A4	240 X 327 mm	210 X 297 mm	192 X 279 mm	0,900 kg	260 X 360 X 35 mm
UCD255N2A3	327 X 450 mm	297 X 420 mm	279 X 402 mm	1,435 kg	360 X 480 X 35 mm
UCD255N2A2	450 X 624 mm	420 X 594 mm	402 X 576 mm	2,100 kg	460 X 670 X 35 mm
UCD255N2A1	624 X 871 mm	594 X 841 mm	576 X 823 mm	3,100 kg	660 X 910 X 35 mm
UCD255N2B2	530 X 730 mm	500 X 700 mm	482 X 682 mm	2,800 kg	560 X 760 X 35 mm
UCD255N2B1	730 X 1030 mm	700 X 1000 mm	682 X 982 mm	4,500 kg	760 X 1060 X 35 mm
UCD255N281	9.68" X 12.18"	8.5" X 11"	7.79" X 10.29"	1.984 lbs	9.84" X 12.60" X 1.38"
UCD255N217	12.18" X 18.18"	11" X 17"	10.29" X 16.29"	3.196 lbs	12.60" X 18.90" X 1.38"
UCD255N222	23.18" X 29.18"	22" X 28"	21.29" X 27.29"	6.172 lbs	22.83" X 29.92" X 1.38"
UCD255N223	21.18" X 31.18"	20" X 30"	19.29" X 29.29"	7.936 lbs	22.44" X 32.28" X 1.38"
UCD255N224	25.18" X 37.18"	24" X 36"	23.29" X 35.29"	8.157 lbs	25.98" X 37.80" X 1.38"
UCD255N234	31.18" X 41.18"	30" X 40"	29.29" X 39.29"	10.361 lbs	32.28" X 42.52" X 1.38"
UCD255N246	41.18" X 61.18"	40" X 60"	39.29" X 59.29"	15.983 lbs	42.13" X 62.60" X 1.38"



T: +90 850 433 67 85 / info@mtdisplays.com / www.mtdisplays.com

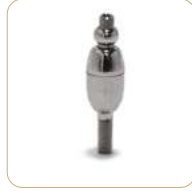
OPTIONAL ACCESSORIES



Hanging Kit
UYAA001020 for small sizes. (A4 to B1)
UYAA001120 for big sizes. (30"x40" to 40"x60")
Hanger kit to be ordered separately.



Ceiling and floor hanger for double sided frames. Packed in 5. / UYAA000000



Stopper on the frames for 25 mm double sided frames. Packed in 10. / UYAA002100



Ceiling hanging kit for sizes B1, A0, B0, 30"x40", 40"x60". Packed in 10. UYAA001100



UYAA004000
Wire Cable.



Ceiling hanger for doublesided frames for A4 to A2, B1 and 20"x30". Packed in 10. UYAA001000

PHYSICAL DATA

Material

25 mm aluminum profiles.
PET poster cover, PP backing.

Poster Material & Thickness

0,10 – 0,20 mm for standard product. Max poster thickness is 2 mm. Any non-standard poster thicknesses should be indicated with order.

Surface Finish

Silver anodized or black colour, antimicrobial powder coating. Custom colors also available, call for custom color requests.

Recycled Content

Up to %78 recycled content used.

Warranty

All products are guaranteed for 3 years by MT Displays with below conditions:
[Warranty Conditions](#)

Installation Considerations

Each frame is packed individually in a cardboard box. Each frame includes hanging hooks for suspension. Frames are provided with portrait/vertical assembly slots. In case of landscape/horizontal use, please indicate with the order. All accessories are optional, not included in the original box.

Storage Conditions

Goods should be stored at 0° to 25°C in a dry place. Store in the original package.

Design Considerations

Suitable for silk screen printing, max. letter height is 12/14 mm.

Cleaning and Disinfecting

Clean your displays, with damp microfiber clothes, rinsed with simply water or warm, soapy or gentle shampooed water. Avoid using vinegar, abrasive, acidic, alcohol-based or heavy cleaners or cleaners containing Ammonia. Only after cleaning the product, if needed, simply apply disinfectant or sanitizer that is in compliance with your local guidelines and regulations.

PRINT TEMPLATES

Double Sided Snap Frame - A4

Document Size: 220 x 307 mm (Includes Bleeds)
Finished Size: A4 (210 x 297 mm) [Print](#)
Poster Thickness:

Double Sided Snap Frame - A3

Document Size: 307 x 430 mm (Includes Bleeds)
Finished Size: A3 (297 x 420 mm) [Print](#)

Double Sided Snap Frame - A2

Document Size: 430 x 604 mm (Includes Bleeds)
Finished Size: A2 (420 x 594 mm) [Print](#)

Double Sided Snap Frame - A1

Document Size: 604 x 851 mm (Includes Bleeds)
Finished Size: A1 (594 x 841 mm) [Print](#)

Double Sided Snap Frame - B2

Document Size: 510 x 710 mm (Includes Bleeds)
Finished Size: B2 (500 x 700 mm) [Print](#)

Double Sided Snap Frame - B1

Document Size: 710 x 1010 mm (Includes Bleeds)
Finished Size: B1 (700 x 1000 mm) [Print](#)

Double Sided Snap Frame - 8.5"x11"

Document Size: 8.9" x 11.4" (Includes Bleeds)
Finished Size: 8.5"x11" (215.9x279.4 mm)

Double Sided Snap Frame - 11"x17"

Document Size: 11.4" x 17.4" (Includes Bleeds)
Finished Size: 11"x17" (279.4x431.8 mm)

Double Sided Snap Frame - 22"x28"

Document Size: 22.4" x 28.4" (Includes Bleeds)
Finished Size: 22"x28" (558.8 x 711.2 mm)

Double Sided Snap Frame - 20"x30"

Document Size: 20.4" x 30.4" (Includes Bleeds)
Finished Size: 20"x30" (508x762 mm) [Print](#)

Double Sided Snap Frame - 24"x36"

Document Size: 24.4" x 36.4" (Includes Bleeds)
Finished Size: 24"x36" (609.6x914.4 mm)

Double Sided Snap Frame - 30"x40"

Document Size: 30.4" x 40.4" (Includes Bleeds)
Finished Size: 30"x40" (762x1016 mm) [Print](#)

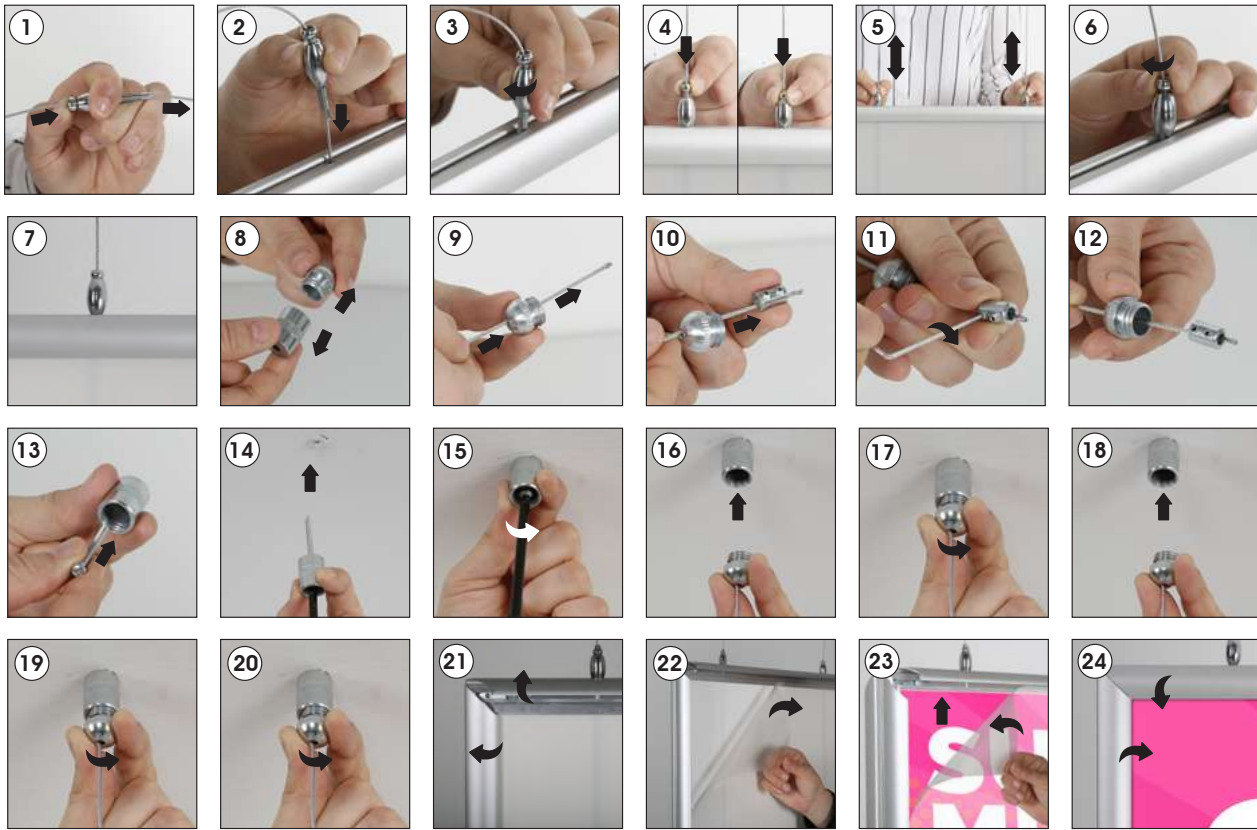
Double Sided Snap Frame - 40"x60"

Document Size: 40.4" x 60.4" (Includes Bleeds)
Finished Size: 40"x60" (1016 x 1524 mm)



INSTALLATION INSTRUCTIONS

Double Sided Snap Frame / 1001864



NOTE:

- Stopper accessorie and ceiling hanger are optional parts.
- P.S. Die Bestellung von Stopper und Deckenhängung ist freigestellt.

- Please inform the order number on the product or on the carton (e.g. 1/110001394-460) to the place that you have made the purchase if any problem with the product occurs.
- All rights reserved. All pictures, figures and writings are secured internationally by copy-right law. Infringements will be sued by civil and legal law.



This technical sheet's contents are all subject to update and modification at MT Displays' exclusive discretion. There is nothing official about this document. For final and legally binding information, please get in touch with the sales staff at MT Displays.



T: +90 850 433 67 85 / info@mtdisplays.com / www.mtdisplays.com